

Concepts Redefined.

Your Dream Kitchen. Built for Life.



A Visual Dream. Completely Customized.

Experience timeless materials designed for effortless beauty. From custom PU color finishes to striking glass and seamless minimalism, the aesthetic is entirely up to you.

“Swipe, wipe,
always new.”



Born from Architectural Rigour

Established in 2009 by an architect, Concepts Redefined was founded with a singular vision: to completely reimagine the Indian residential residential kitchen.

We abandoned traditional, vulnerable materials to build exclusively with “The Green Metal”—applying the uncompromising precision of commercial engineering to the aesthetic demands of domestic luxury.

100% Stainless Steel.
Zero compromises.





Beautifully Indestructible.

What if your kitchen could outlast your house? Beneath the breathtaking exterior lies a zero-compromise foundation. We are completely abandoning traditional, fragile materials to revolutionize the residential modular kitchen.



The Green Metal Foundation

The rock-solid backbone of every module is forged from 100% 304-Grade, 18/8 Stainless Steel.

0.8mm Carcass

The thick, unyielding structural anchor that guarantees lifelong alignment.

Rust-Resistant Core

Completely immune to the degradation that plagues traditional setups.



The Anatomy of Perfection

The Skeleton: 304 Grade
Green Metal Carcass.
Zero rot, zero warping.

1

The Mechanics:
German-engineered Hettich
hardware secured flawlessly
with 304-grade nuts, screws,
and spacers.

2

The Canvas:
Completely customized
PU color shutters and
sleek modern glass.

3



THE ANATOMY OF LIFELONG DURABILITY

THE CARCASS

0.8 mm stainless steel structure carrying a lifelong warranty.

THE METAL

100% 304 Grade (18/8) Stainless Steel – the ultimate 'Green Metal'.



THE CONNECTORS

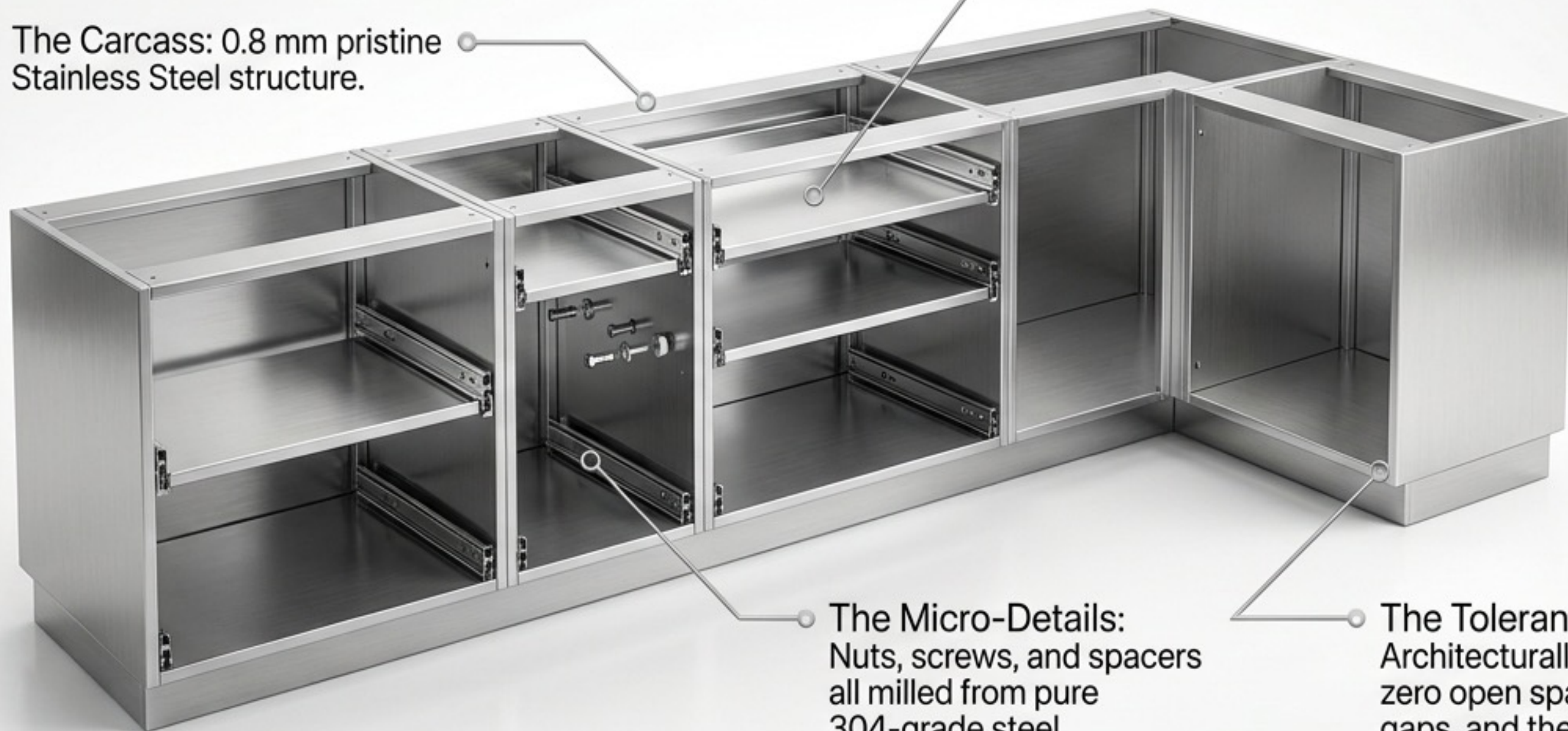
High-grade nuts, screws, and spacers all engineered from 304 grade steel to prevent internal failure.



Engineered for Eternity

The Carcass: 0.8 mm pristine Stainless Steel structure.

The Hardware: German-engineered Hettich channels (or equivalent) for flawless, weightless movement.



The Micro-Details: Nuts, screws, and spacers all milled from pure 304-grade steel.

The Tolerances: Architecturally designed for zero open space, zero corner gaps, and the absolute least sound output.

The Result: A lifelong warranty built on absolute structural integrity.



A Clean Slate for Life



100% Waterproof

Absolutely no structural degradation from internal plumbing leaks or water seepage under the sink.



Absolute Pest Immunity

Termites cannot eat steel. Zero entry points for any living being inside the modules.



Lifelong Hygiene

A non-porous, perfectly sealed environment where bacteria and mold cannot take root.



Peaceful, Precision Mechanics

A durable kitchen must have internal moving parts that match its resilience. By anchoring premium hardware directly into 0.8mm steel, we eliminate the friction of daily life.

1

Buttery smooth channel movement

2

Zero slamming, zero squeaking

3

No dead space—every dark corner is perfectly utilized



THE SIX PILLARS OF THE GREEN METAL



ABSOLUTE HYGIENE

Seamless, non-porous surfaces.
Swipe and wipe clean.



PEST IMMUNITY

100% insect-free. No structural
entry points for any living beings.



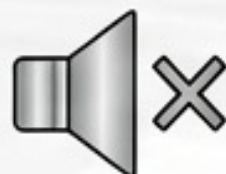
WATER RESILIENCE

Zero effect from water seepage
on internal module materials.



LIFELONG DURABILITY

Rust-resistant 304 Grade 18/8
steel engineered for decades.



SILENT ACOUSTICS

Smooth channel movement
engineered for the least
possible sound.



BESPOKE AESTHETICS

Complete external colour
customisation without
compromising the core.

THE CONCEPTS REDEFINED ADVANTAGE

DIMENSION	TRADITIONAL KITCHENS	CONCEPTS REDEFINED
WATER SEEPAGE	Warping, swelling, and structural degradation	Complete immunity; no effect on internal material.
PEST SUSCEPTIBILITY	Vulnerable to termites and nesting	100% termite and pest-proof core.
LIFESPAN	Limited; degrades with heavy residential use	Lifelong warranty driven by rust-resistant steel.
HYGIENE & MAINTENANCE	Porous surfaces harbour bacteria	Medical-grade hygiene; absolute surface integrity.

MASTERFUL SPACE UTILISATION

A place for everything, and everything in its place.



Precision pull-out trays for maximum depth access.



Fluid corner carousels ensuring zero wasted space.



Vertical storage mastery with heavy-duty structural support.

THE ENGINEERING EQUATION



**100% SS
Core**

304 Grade
Structure &
Fasteners



**German
Hardware**

Hettich /
Equivalent
Mechanisms



**Smooth
Working**

Silent
acoustics,
fluid channels

**ZERO
BREAKDOWNS
& CUSTOMER
DELIGHT**

Vulnerability vs. Invincibility

	Traditional Wood/MDF	The Green Metal Core
Moisture Response	Swells, warps, and rots over time.	100% waterproof; unaffected by seepage.
Pest Resistance	Prime target for termites and borers.	Utterly impenetrable to all insects.
Hardware Longevity	Screws loosen as wood degrades.	304-grade steel anchors prevent all sagging and breakdowns.
Lifespan	Requires replacement every 10-15 years.	Engineered to outlast the home.

Form Meets Absolute Purity

True luxury is peace of mind. By utilising 18/8 rust-resistant stainless steel and eliminating all internal voids, we create an environment environment that is fundamentally hostile to pests.

Key Insight: 100% insect-free. No living beings can enter or nest inside the modules. Hygiene guaranteed for life.





Shattering the Industrial Myth

Incredible strength does not require an industrial aesthetic. We wrap military-grade durability in warm, homey, magazine-ready design. A high-end designer space that perfectly hides an indestructible core.

The Equation of Delight



Unbreakable 0.8mm
SS Architecture

+



Frictionless German
Hardware

+



Custom Visual
Finishes

=

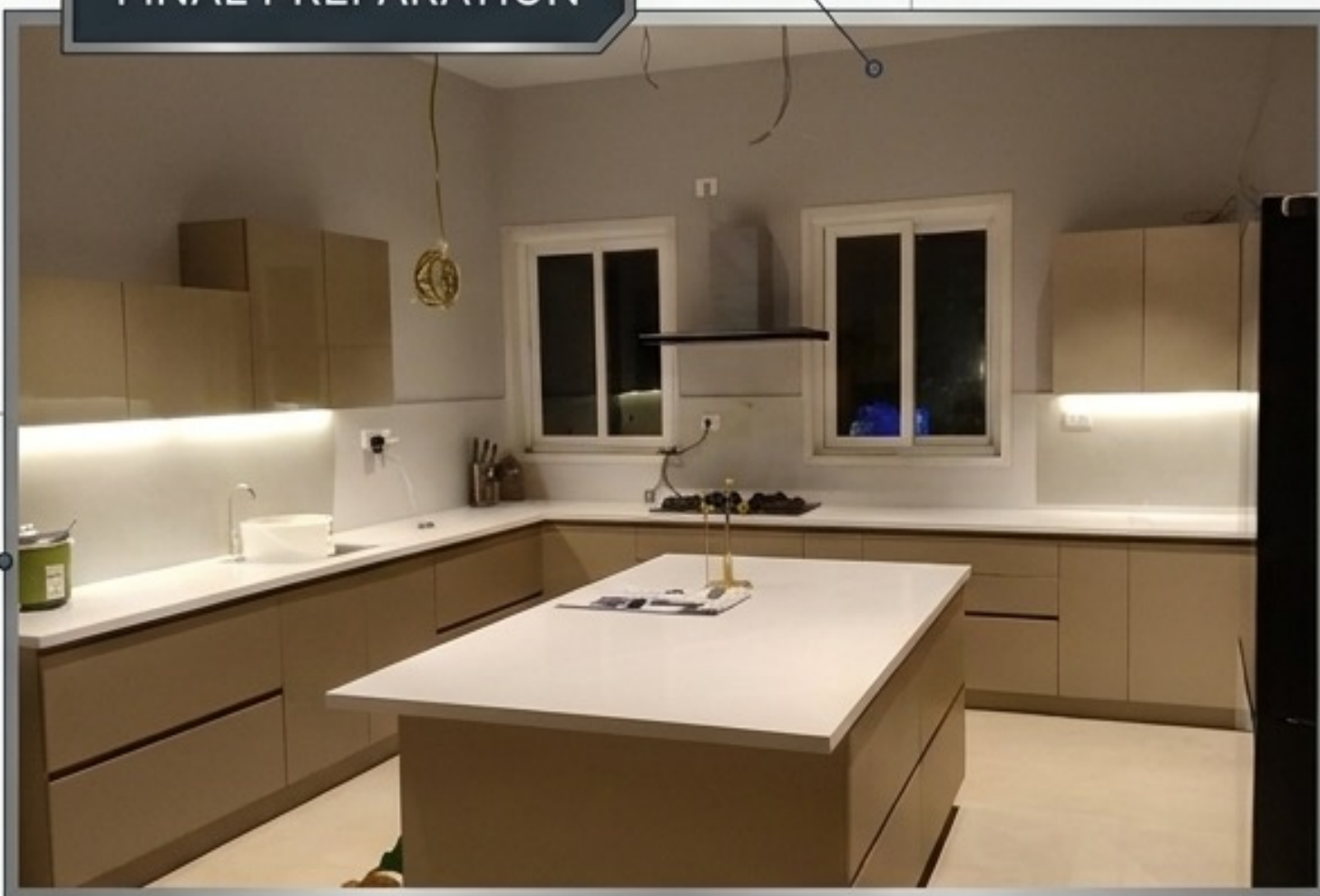
**Total
Customer
Delight.**

Smooth Working + Zero Breakdowns + Supreme Value. We don't just build kitchens; we build a lifelong commitment.

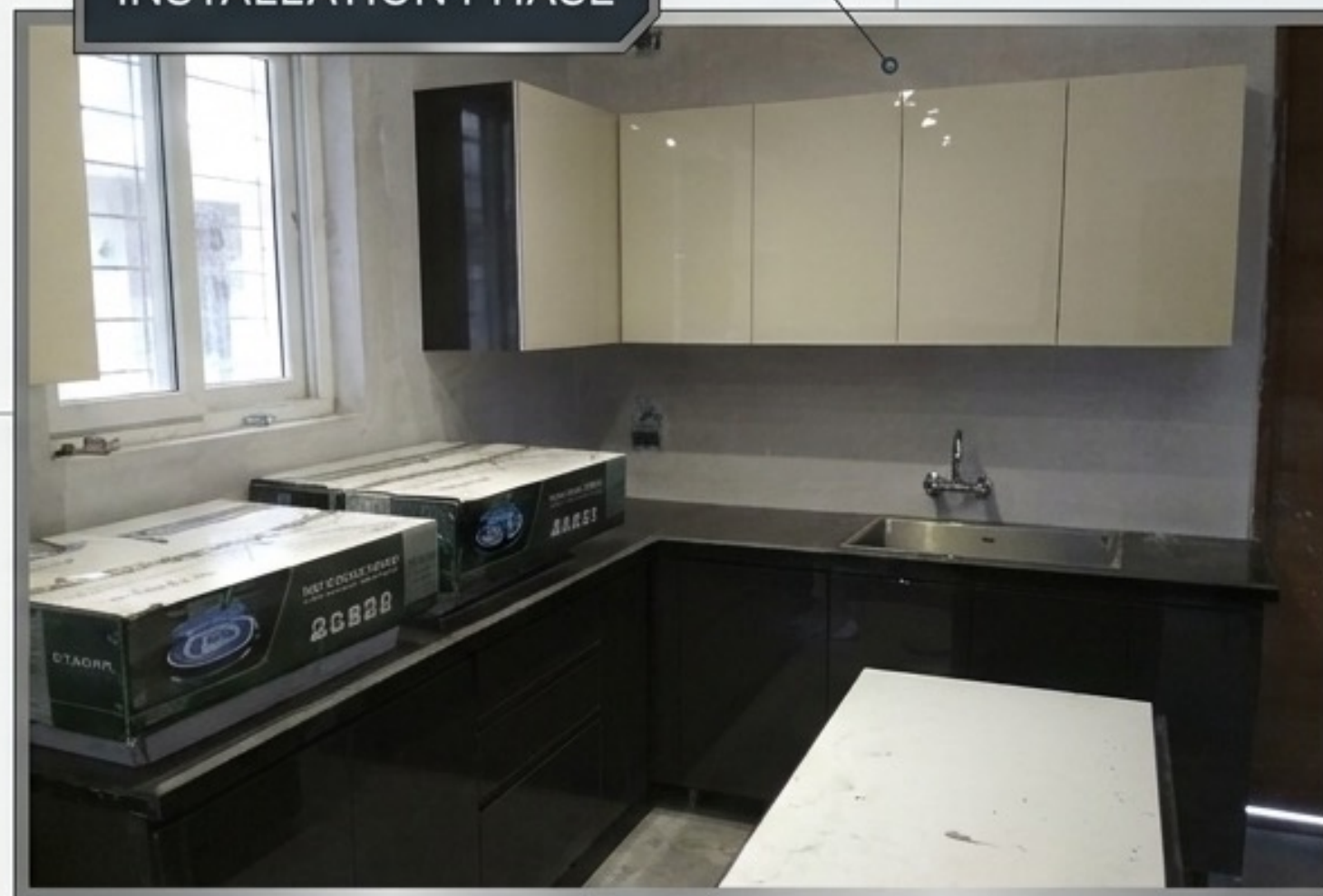
VISION TO REALITY: ACTUAL HANDOVERS

Authentic, pre-handover documentation of our uniform quality and finish on-site.

FINAL PREPARATION



INSTALLATION PHASE



Every module arrives perfectly calibrated, ensuring site execution matches the architectural blueprint seamlessly.





Reality Better Than Renders

Flawless execution is our standard. Our confidence in our design and hardware results in **zero breakdowns and unparalleled reliability** across the country.

Trusted by top architects and homeowners across Delhi, Mumbai, Hyderabad, Pune, Gujarat, and beyond.





Your Canvas, Engineered to Perfection

From bold statement colors and unique island configurations to serene, muted minimalism. Concepts Redefined delivers superior, uniform quality and finish across every customized design language.

Beyond the Kitchen: The Vanity

The supreme water resistance of the Green Metal makes it the ultimate architectural choice for luxury bathrooms. We translate our waterproof, timeless promise into bespoke vanity architecture, perfectly paired with natural stone and seamless mirrors.



BEYOND THE KITCHEN

The exact same lifelong durability and water immunity applied to every high-wear zone in the home.



Bespoke Vanity Units:
Immune to bathroom humidity.



Utility & Laundry Integration:
Heavy-duty support for appliances
with custom SS enclosures.

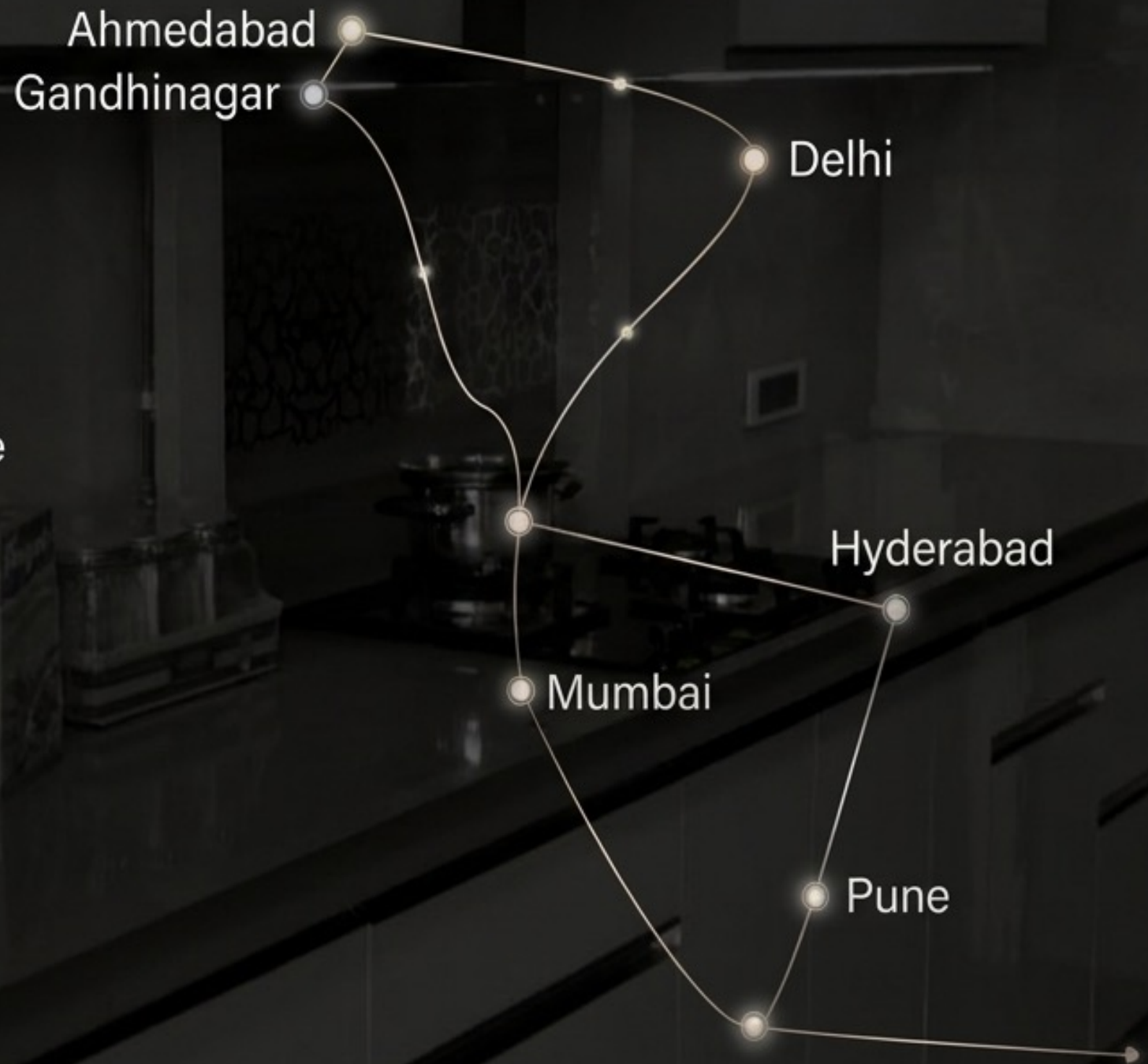
The No-Compromise Ecosystem



A Legacy of Zero Breakdowns.

From our roots in Ahmedabad and Gandhinagar, we have expanded to create customer delight across Delhi, Hyderabad, Mumbai, Pune, and beyond. We believe high customer satisfaction is our greatest advertisement.

Backed by a
Lifelong Warranty





Our Commitment for Life

Because our 0.8mm internal structure is so incredibly robust, we offer a lifelong warranty on all our stainless steel carcasses. You aren't just buying a kitchen; you are investing in absolute, long-term reliability.



Begin Your Dream Project.

Concepts Redefined

228, Platinum Plaza, Opp. I.O.C. Petrol Pump,
Bodakdev, Ahmedabad – 380 054

T: (079) 40007890 | M: +91 9898907979
| +91 9925009794

E: conceptsredefined09@gmail.com

W: www.conceptsredefined.in

Concepts Redefined

228, Platinum Plaza, Opp. I.O.C. Petrol Pump,
Bodakdev, Ahmedabad – 380054
+91 9898907979 | +91 9925009794
conceptsredefined09@gmail.com
www.conceptsredefined.in